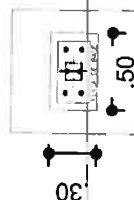
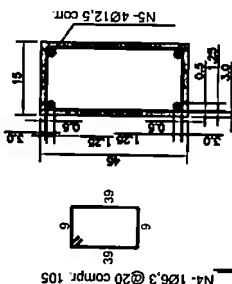
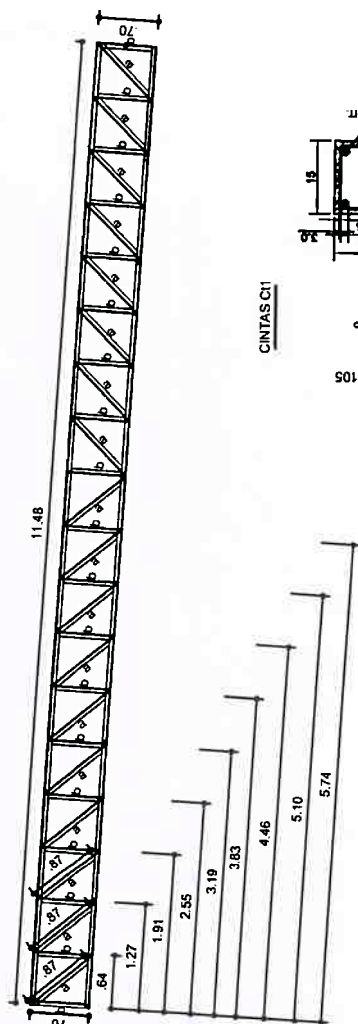
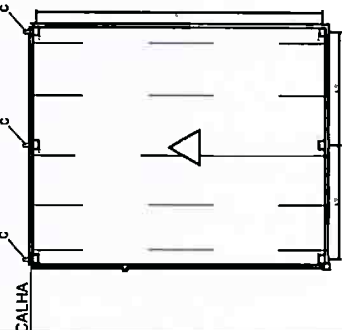


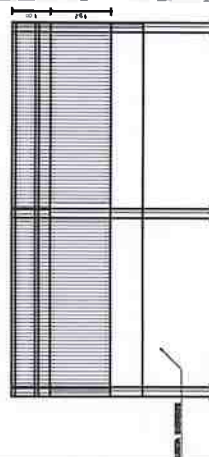
FF	WAPCS	QUANT	DESCRICAO	AREA [m²]	OBSERVAÇÃO	TOTAL [m²]
1	18		COLUMBA			
2	1	1	150x50x170,00	53,684		540,00
3	4					
4	1	1	CH 18x20x350	100 m²		396,78
5	5					
6	1	1	PERNO QUÍF			
7	34	34	ARRIBA LA USA 2	24,000	CHAMBURO	30,42
8	48	48	POPICAS EXT 0,90"			
9	10	10	TORÇ-AS			
10	1	1	100x50x170,00	96,70 M		482,43
11			CORREIJA DA			
12			Impressora Fonele & Europe	40MP		
13			Tela Transpaal 0,5mm	100,00MP		
14			TRELIÇAS			
15	3	3	150x50x170,00	148,36 M		1014,66
16						
17						
18						
19						
20						
21						
22						
23						
24						
25						
26						
27						
28						
29						
30						
31						
32						
33						
34						
35						
36						
37						
38						
39						
40						
41						
42						
43						
44						
45						
46						
47						
48						
49						
50						
51						
52						
53						
54						
55						
56						
57						
58						
59						
60						
61						
62						
63						
64						
65						
66						
67						
68						
69						
70						
71						
72						
73						
74						
75						
76						
77						
78						
79						
80						
81						
82						
83						
84						
85						
86						
87						
88						
89						
90						
91						
92						
93						
94						
95						
96						
97						
98						
99						
100						
101						
102						
103						
104						
105						
106						
107						
108						
109						
110						
111						
112						
113						
114						
115						
116						
117						
118						
119						
120						
121						
122						
123						
124						
125						
126						
127						
128						
129						
130						
131						
132						
133						
134						
135						
136						
137						
138						
139						
140						
141						
142						
143						
144						
145						
146						
147						
148						
149						
150						
151						
152						
153						
154						
155						
156						
157						
158						
159						
160						
161						
162						
163						
164						
165						
166						
167						
168						
169						
170						
171						
172						
173						
174						
175						
176						
177						
178						
179						
180						
181						
182						
183						
184						
185						
186						
187						
188						
189						
190						
191						
192						
193						
194						
195						
196						
197						
198						
199						
200						
201						
202						
203						
204						
205						
206						
207						
208						
209						
210						
211						
212						
213						
214						
215						
216						
217						
218						
219						
220						
221						
222						
223						
224						
225						
226						
227						
228						
229						
230						
231						
232						
233						
234						
235						
236						
237						
238						
239						
240						
241						
242						
243						
244						
245						
246						
247						
248						
249						
250						
251						
252						
253						
254						
255						
256						
257						
258						
259						
260						
261						
262						
263						
264						
265						
266						
267						
268						
269						
270						
271						
272						
273						
274						
275						
276						
277						
278						
279						
280						
281						
282						
283						
284						
285						
286						
287						
288						
289						
290						
291						
292						
293						
294						
295						
296						
297						
298						
299						
300						
301						
302						
303						
304						
305						
306						
307						
308						
309						
310						
311						
312						
313						
314						
315						
316						
317						
318						
319						
320						
321						
322						
323						
324						
325						
326						
327						
328						
329						
330						
331						
332						
333						
334						
335						
336						
337						
338						
339						



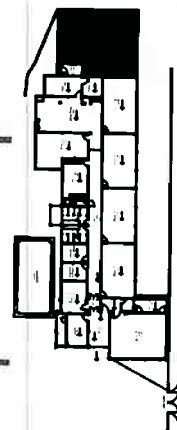
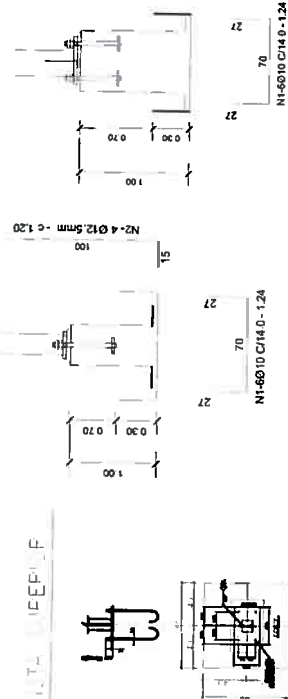
AO	N	DIAM	Q	UNIT (cm)	C. TOTAL (cm)
CA50	1	10.0			4464
	2	10.0			2880
	3	6.3			4500
	4	6.3			9660
	5	12.5			7360

ÇO	DIAM	C-TOTAL (m)	PESO + 10 % (kg)
CASO	6.3	42478	114.47
	10.0	21499	145.90
	12.5	6864	72.71

Vol. de concreto total (C-20) = 3,01 m³
Área de forma total = 22,23 m²



VISTA FRONTAL



LOCAÇÃO NA UNIDADE ESCOLAR



FUNDO COMUNITÁRIO DE VOLTA REDONDA - FURBAN

[illegible]

